



**Banana Moon
Day Nursery**



Find a place
to grow
their
world

Welcome to Banana Moon Day Nursery

The emphasis at Banana Moon Day Nursery is to see everything from a parent's point of view, creating a caring and loving learning environment for children from three months old to school age. Banana Moon is designed to be enjoyable and stress-free for parents as well as providing the highest quality childcare for their little ones at every stage of their development. Quality of care and learning is our priority.

As a parent of young children, choosing a nursery is one of the most important and hardest decisions you face, which is why the reassurance you feel when leaving your child in our capable hands is of utmost importance to us here at Banana Moon. The well-being and personal development of a child are truly huge responsibilities for a parent to give an organisation and although we are a local business, as we are part of a franchise, we are fully supported by a hugely experienced national team to create a nursery where children can be educated through play in a safe and fun environment.

We want to encourage children to create memories of a childhood spent having fun; playing with their friends and being themselves, scribbling doodles on paper that make sense to them and only them; for them to get messy, be happy to be taking part and know that if they spill their milk, there really is no point in crying about it – all of this, while they feel safe in an environment that is created just for them.

We are confident you will appreciate our nursery: a caring, loving and healthy environment for an enjoyable early years learning experience for your child. But this brochure will only tell you part of that story, so please do get in touch and visit us. We would love to show you around and you can be assured that any input from parents is always welcomed and acknowledged.

Wishing you all the best in your childcare search,

**Kully Shahi &
Leena Shahi**

Nursery Directors





Baby Moons

In Banana Moon world our babies are known as Baby Moons – we provide a safe environment for children from the age of three months until they are confidently mobile. Each nursery has a separate sleeping area and changing facilities.

zzzzzzz
CCTV
monitored
sleep rooms

3:1
children to
staff ratio

From
3
months



For the brand-new ones

We work on a maximum of a 3:1 children-to-staff ratio, with the continuity of staff being a priority.

Our Baby Moons are bright, cheerful and stimulating, offering a caring environment. The emphasis is very much on providing home-from-home care with lots of play, love and attention.

Children are encouraged to explore the world of colour, shapes and texture through the use of natural light, toys, adult interaction and lots of sensory experiences. Here at Banana Moon, we work closely with you to ensure your baby's home routine is followed. This provides continuity and stability for you and your child.

To ensure a smooth, stress-free transition from home to nursery life, convenient settling-in sessions are always arranged. During these sessions, which you will attend, your baby's needs and any special requirements can be discussed with nursery staff.



Teenie Moons

Once your little one is actively up and about with confidence and ready to move on, joining our Teenie Moons would be their next step.

3:1
children to
staff ratio

Up to
2
years

CCTV
operates
throughout our
nurseries

For the adventurous ones



MOVIE

See your child develop through a mix of sensory and educational activities.

These areas are bright and colourful – Teenie Moons cater for children up to the age of two years old, working on a maximum of a 3:1 children-to-staff ratio.

As children begin to explore, they will gain confidence and then be able to participate in a wide range of educational and fun activities, all of which will be planned in advance and will include colouring, painting, messy play, singing etc. to create a fun-filled day for your child.





Mini Moons

At two years of age, your child will enter the world of our Mini Moons. This environment caters for children aged two to three years of age with a maximum of a 4:1 children-to-staff ratio.

4:1
children to
staff ratio

Between
2-3
years


Potty training
and support



Moon

For the creative ones

These Mini Moons are full of busy energy as, by this stage, your child will be able to experience a wider range of educational yet fun activities that have been carefully selected to stimulate their ever-expanding minds.

When it comes to potty training, we will encourage your child to be as independent as possible. All we ask is that you bring in lots of spare clothes in case they have a little accident, so they will have their own clothes ready to be changed into.

With the EYFS planning and observation system in place, the staff team will be actively encouraging your child's interests, offering them further opportunities to explore. Within this environment, they start to prepare for pre-school, so self-selection of activities and independence is encouraged throughout the day.



Supporting the
move to big school.



Full Moons

Our Full Moons are our preschoolers; children aged three years to school age who are looked after by our team with an 8:1 children-to-staff ratio.

8:1
children to
staff ratio

From
3+
to school age


Social interaction
& transition

For the unique ones

With the children's interests being at the centre of all planning, the day passes by quickly as the fun never stops!

Children learn through play. During free play sessions, children are encouraged to be independent and to make their own choices from a wide range of different activities.

A structured day is centred on individual learning where progress is carefully observed and recorded by your child's key person. This, coupled with lots of fresh air, provides a busy day for all in our Pre-School environment.

At the end of their time in pre-school, the children will have increased levels of confidence and be socially interactive, thus they experience a smooth transition to full-time schooling and a logical progression of their continued learning.





Your child's food

Here at Banana Moon we recognise the importance of providing a nutritious, healthy meal as the foundation of a fun and educational eating experience. Our recipes are created utilising fresh seasonal ingredients to create tasty and well-balanced meals.



Self-service
encouraged

Fresh
food

cooked daily



Dietary
requirements
catered for

Happy healthy eating

Our wide choice of menus reflects the cultural diversity of our little diners and of course we cater for all allergies and other dietary requirements.

With family-style serving, we ensure that the eating experience within the nursery connects with the food you serve at home. We offer a carefully designed mix of familiar foods as well as encouraging children to explore new tastes and sensations. We will keep you updated with what your child likes and dislikes and will share our recipes with you if you would like to cook the same meals at home.

We offer two home-cooked hot meals per day, as well as having healthy snacks available at certain times during the morning and afternoon sessions. Younger babies have a separate weaning menu and we will work closely with you to ensure that the individual needs of your child are met.

We encourage the older children to develop independence by allowing them to self-serve their own food, and we aim to include educational elements wherever possible, by discussing the source of the ingredients and getting the children involved in mealtime preparations to create a happy, sociable experience.





Weekly sample


Frequent menu
rotation


Fresh
fruit
available as
snacks


Vegetarian
options
available

What's on the menu?

Monday	Lunch	Roast and trimmings
	Tea	Courgette and pea pasta bake
	Dessert	Rice pudding with jam
Tuesday	Lunch	Homemade chicken goujons, seasonal vegetables and new potatoes
	Tea	Butterbean stew and bulgar wheat
	Dessert	Eve's pudding with custard
Wednesday	Lunch	Lamb tagine and mixed vegetables with couscous
	Tea	Soup with bread and butter
	Dessert	Seasonal fruit salad
Thursday	Lunch	Thai pork mince with noodles
	Tea	Turkey, broccoli and cauliflower cheese
	Dessert	Rhubarb crumble and custard
Friday	Lunch	Haddock and salmon pie with red cabbage and runner beans
	Tea	Macaroni cheese
	Dessert	Mandarin cheesecake
Daily vegetarian options available.		

Our facilities



Fingerprint
biometric
access

CCTV
operates
throughout our
nurseries



Outdoor
play



Sleep
rooms



Interactive
Screen

Our facilities at Banana Moon Day Nursery

Sleep room

Every Banana Moon setting has a dedicated sleep room with soft lighting and natural wood cots. This calm and quiet room provides a restful environment for babies. All sleeping babies are, of course, very closely monitored to ensure their safety and well-being.

Outdoor play

In addition to all of the indoor activities and facilities, the children go outside every day throughout the year for fresh air and exercise. Banana Moon considers outdoor play to be an essential part of children's learning and development.

Interactive Screen

An interactive learning experience which allows children of all ages to explore the world of ICT.

CCTV and biometric security

CCTV operates throughout our nursery. This added security protects children, staff and parents as well as acting as a deterrent to any unwelcome visitors. Security is of paramount concern at Banana Moon.

With this in mind we operate a 'fingerprint' biometric access system to protect children and nursery staff. This system allows nursery personnel to register parents' fingerprints in seconds. Parents then simply press their fingerprint on a sensor pad at the door to gain fast, easy access. They can leave or collect their children without fuss, while unregistered visitors must ring a bell and wait for a member of staff. The biometric system is far more secure than any PIN code or swipe card system and leaves our staff free to concentrate on looking after your little ones, rather than having to rush away to answer the door.

Capturing your child's early years learning and development.

We recognise the importance of spending as much time as possible with your child while they attend our nursery and, perhaps more importantly, making sure that we are tracking their individual development with the Early Years Foundation Stages. Our on-going investment in nursery software management helps us achieve just that.

Our custom-made software is designed to make capturing observations of your child's development easy, with the ability to share precious moments at the click of a button.

Features include:

- Taking the register as your child arrives
- Capturing their daily routine: snacks, sleeps, learning
- Making observations of their learning
- Creating a personalised learning journal
- Monitoring their development
- Planning next steps in their development.

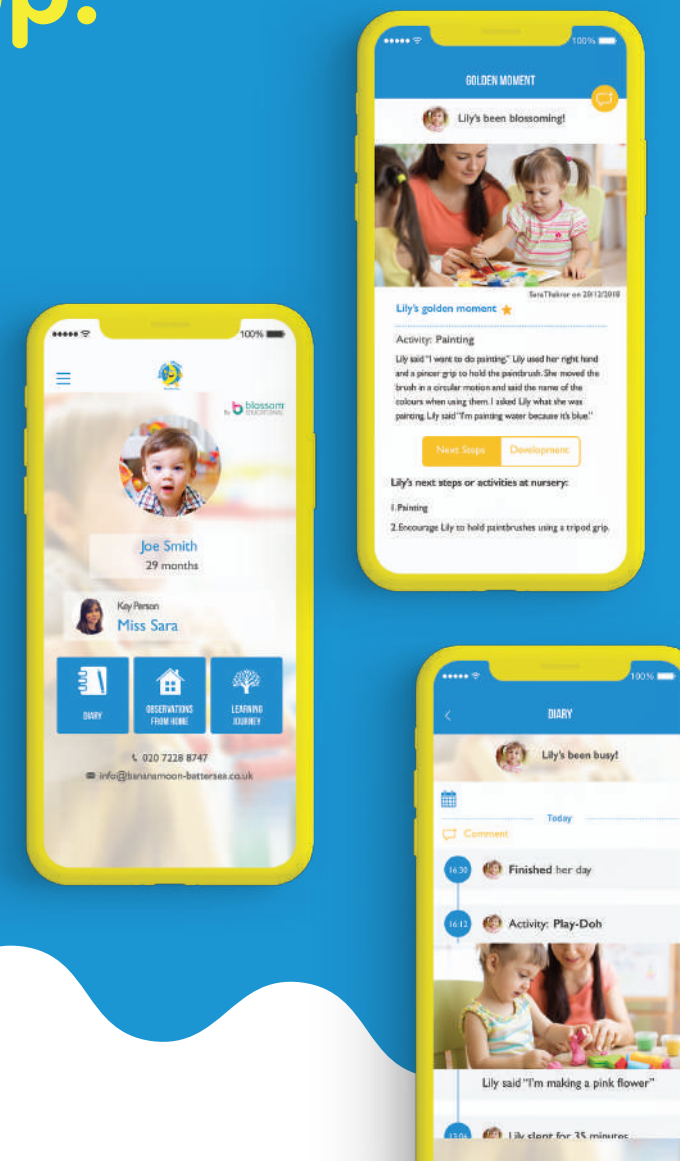


Giving every parent peace-of-mind with the Parent App.

We understand that starting at nursery can be a sensitive time for both you and your child. Fortunately, at Banana Moon, from your child's first day, you will be given access to your very own Parent App. Whether it be a successful settling in session, an activity to try at home or a clean plate at lunch, you will be involved every step of the way.

The app helps:

- Capture and share their daily routine
- Share pictures with you and make observations
- Easily comment and share your feedback with us from home
- Provide access to named family members, like grandparents
- Confirm who their Key Person is.





Please call us to arrange a viewing.

Banana Moon Day Nursery

Unit E-G, Tutbury Avenue, Littleover, Derby DE23 3AT

Tel: **01332 981499**

info@bananamoon-littleover.co.uk

bananamoon-littleover.co.uk